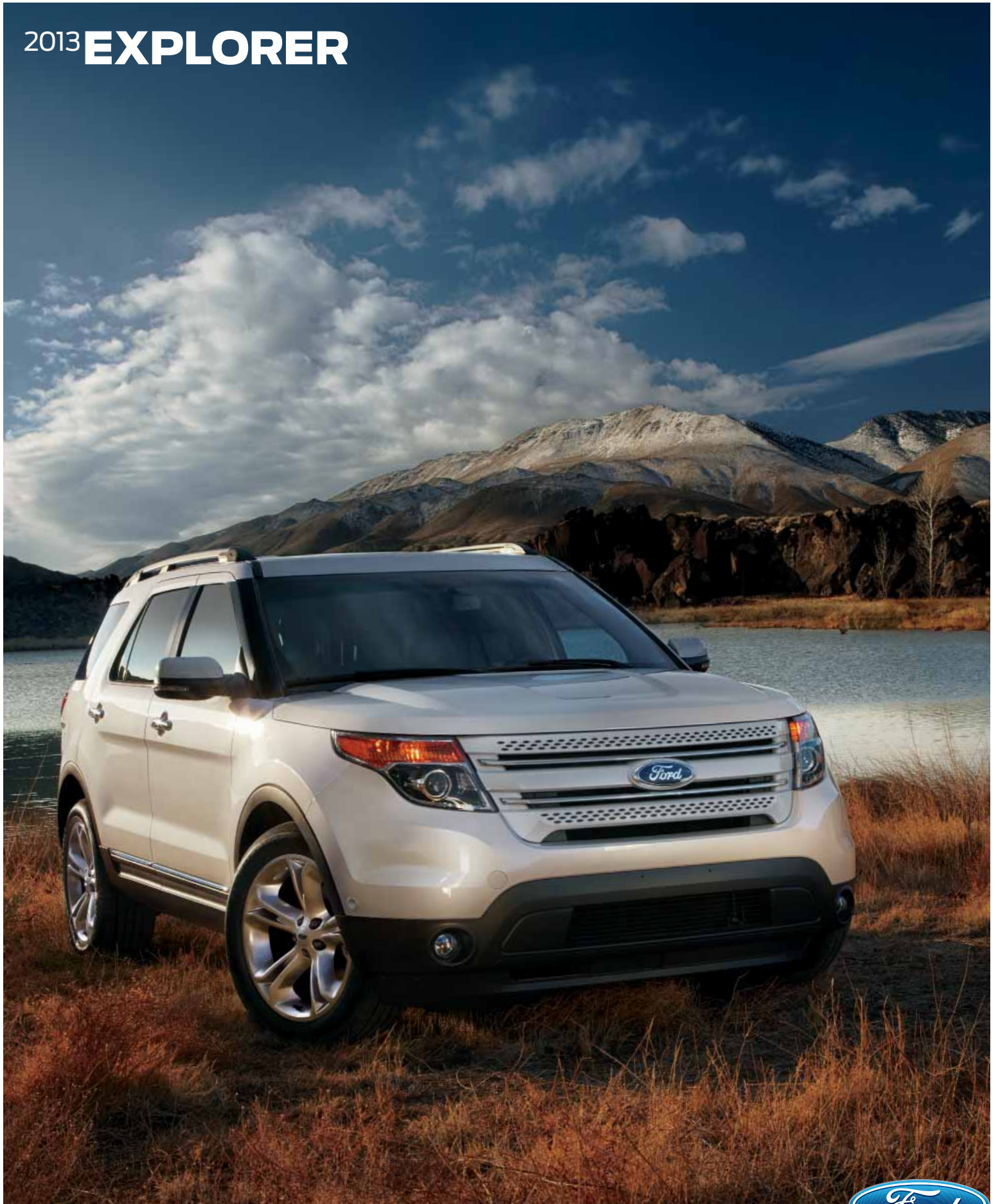


2013 **EXPLORER**



GO.
DO.



Memories. Make them stand out.

In the 2013 Explorer – your family's very own 7-person adventure machine. Explorer inspires with hwy fuel economy even the hybrid competition in its class can't beat – 28 mpg¹ with the 2.0L EcoBoost[®] engine.² Maximize your traction with the turn of a dial.² Stay connected to your calls, music and more with both hands on the wheel.² Maintain your lane, see your path clearly and more with our driver-assist advancements.² There's even a new heated steering wheel,² perfect for those chilly, early-morning starts. Go. Do. In the 2013 Ford Explorer.

XLT. Ruby Red Metallic Tinted Clearcoat. Available equipment.

¹EPA-estimated, FWD. Class is Large Utilities vs. 2012 competitors. ²Available feature.

2013 **EXPLORER**
ford.com








Dial up your control. Any road. Any time.



Challenging conditions? Simple solution: Just turn the dial to match the scene outside. Our highly capable Terrain Management System™¹ is paired with Intelligent 4WD¹ to give you seamless shift-on-the-fly confidence. It's one more way Explorer is designed to inspire you. Go. Do.



-  **Mud, Rut** lets the tires spin a bit if needed to help you keep moving.
-  **Snow, Gravel, Grass** optimizes grip on all sorts of slippery surfaces.
-  **Sand** allows aggressive wheel spin to help you stay on top.
-  **Normal** is ideal for everyday on-road driving.
-  **Hill Descent Control™** regulates your speed on steep declines with just the push of a button.

¹Available feature.



Explore more with best-in-class hwy efficiency.

The way we see it, less stopping for fuel means more time for adventure. So we put our revolutionary 2.0L EcoBoost® I-4 engine¹ in Explorer to give you 28 mpg hwy² – the absolute best of any non-hybrid engine in the class. A 6-speed automatic transmission helps this state-of-the-art, turbocharged, direct-injection powerhouse deliver plenty of low-end torque for acceleration and passing, plus outstanding fuel economy while cruising. A spirited and smart combination. Make the most of every drive with EcoBoost.

Limited. Tuxedo Black Metallic.

¹Available feature. ²EPA-estimated. Class is Large Utilities vs. 2012 competitors.

2013 EXPLORER
ford.com





Enjoy a blend of efficiency and power.

Explorer sets extremely high standards with its 3.5L Ti-VCT V6 engine. It delivers 24 mpg hwy,¹ plus power that's unsurpassed among V6 engines in its class² – 290 hp. Twin independent variable camshaft timing (Ti-VCT) adds an extra measure of precision, contributing to fuel efficiency or power output as your input demands. For a truly engaging drive, take control of the shifting via our 6-speed SelectShift Automatic[®] transmission. Or let it choose the best gear for you.



Limited. White Platinum Metallic Tri-coat. Available equipment.

¹EPA-estimated, FWD. ²Class is Large Utilities vs. 2012 competitors.

2013 **EXPLORER**
ford.com





Stay connected. Easily.

You may head to some far-off places, but voice-activated Ford SYNC^{®1} makes it easy to stay connected in Explorer. No more searching for your phone. No device on your ear. Once paired, SYNC recognizes your phone and transfers your contacts to support voice calling. It also plays music from your phone, MP3, USB or iPod[®]. In fact, any device with Bluetooth[®] capability can stream audio from sources like iHeartRadio[®], Pandora[®] internet radio and many more. Just touch a button on the steering wheel and say things like "Call: the cabin," or "Play playlist: Road trip." SYNC also offers 911 Assist[®], and with an activated SYNC Services account you get business searches, turn-by-turn driving directions, local movie times and more. Personalize it at ford.com/sync. SYNC. Say the word.

Limited. Charcoal Black leather trim. SYNC with MyFord Touch[®]. Available equipment.

¹Available feature. Driving while distracted can result in loss of vehicle control. Only use mobile phones and other devices, even with voice commands, when it is safe to do so. SYNC Services is available on most vehicles and may require a subscription. Traffic alerts and turn-by-turn directions available in select markets. Message and data rates may apply. Not all features are compatible with all phones.

2013 EXPLORER
ford.com



Enrich your adventures. Instantly.

Simpler graphics. Faster touch-screen responses. Easier-to-use controls. These are just a few of the latest improvements we've made to our voice-activated SYNC^{®1} with MyFord Touch.^{®1} Get ultimate control over your phone, entertainment, navigation and climate. MyFord Touch includes SYNC Services,¹ an 8" LCD touch screen, a media hub, 2 LCD screens in the gauge cluster, and familiar 5-way controls on the steering wheel. The system recognizes literally thousands of voice commands – everything from “5-day weather forecast” to “find a historical monument.” So you can explore with both hands on the wheel and your eyes on the road.



Listen to your favorites.

Stream music and other apps from your smartphone via Bluetooth.[®] Access your files from a USB drive, an SD card, a portable hard drive or almost any device you plug into the MyFord Touch media hub. With HD Radio[™] Technology,² you can even “Tag” songs for purchase later at the iTunes[®] Store.

See who's calling.

MyFord Touch makes it easy to keep in touch. The system can download personal photos from your phone book and display them on its full-color screen when you receive a call, place a call or browse your directory. On supported phones, SYNC can also play unique ringtones you've selected to help identify specific callers.

Take the eco-friendly route.

When you upgrade to the Navigation System,² turn-by-turn directions are offered in your choice of Fastest, Shortest or Eco Route. Also included with this system, a 6-month trial subscription to SiriusXM Satellite Radio, Traffic and Travel Link gives you over 130 channels of premium entertainment, plus live infotainment services including local fuel prices, local and national weather, live sports scores and more.

Keep them entertained.

Create a Wi-Fi[®] hotspot³ for passengers by plugging a smartphone or mobile broadband modem into one of the MyFord Touch USB ports. They can browse the Internet while you drive in peace. When in Park, you can use the MyFord Touch media hub to view vacation videos, or let the kids connect their favorite game console.

¹Available feature. Driving while distracted can result in loss of vehicle control. Only use SYNC/MyFord Touch/other devices, even with voice commands, when it is safe to do so. Some features may be locked out while the vehicle is in gear. SYNC Services is available on most vehicles and may require a subscription. Traffic alerts and turn-by-turn directions available in select markets. Message and data rates may apply. Not all features are compatible with all phones. ²Available feature. ³Requires in-vehicle USB mobile broadband connection, PAN-supported mobile phone or proximity to an outside wireless hotspot.

Gather up to 7. In the latest hotspot.

You and your family deserve to travel in style and luxury with leather-trimmed seating, standard inside Explorer Limited. New this year, a heated steering wheel¹ joins the 10-way power, heated and cooled front seats¹ to take your comfort to extremes. Standard seating for 7 features environmentally friendly, supportive, soy-based foam in the seat cushions and seat backs to help conserve limited resources and reduce CO₂ emissions. A dual-panel moonroof¹ fills the cabin with light. This graceful space – crafted to world-class standards for fit and finish – is sure to please one and all wherever your journey takes you.



PowerFold[®] 3rd-row seat¹

Best-in-class 2nd-row head room²

New heated steering wheel¹

Limited. Charcoal Black leather trim with Pecan perforated inserts. Available equipment.

¹Available feature. ²Class is Large Utilities vs. 2012 competitors.

2013 **EXPLORER**
ford.com



Increase your confidence. Both day and night.



Change lanes. Back it up.

Our BLIS® (Blind Spot Information System) with cross-traffic alert¹ is designed to detect traffic in your blind spots. While you're driving, it alerts you with an amber light in your sideview mirror.² As you're slowly backing out of a parking spot, it alerts you with a sound, a message center warning, and the amber light.

Maintain your cruising distance.

Adaptive cruise control and collision warning with brake support¹ is designed to help you maintain a preset gap from the vehicle in front of you. If a potential collision is detected, the system flashes a warning across your windshield, sounds an alarm, pre-charges the brakes and increases brake-assist sensitivity to provide full responsiveness when you do brake.

Keep your lane. Stay alert.

Our new Lane Keeping System¹ is designed to alert you if it detects Explorer drifting toward a lane marker. If so, it applies torque to the steering wheel, directing you to correct your path. If you cross a marker, Explorer shudders the steering wheel, alerting you to steer back toward center. Drowsy drivers should promptly heed the warning of the Driver Alert System, which displays a coffee cup icon in your gauge cluster if it detects that you need to take a break from driving.

Light your way. Brilliantly.

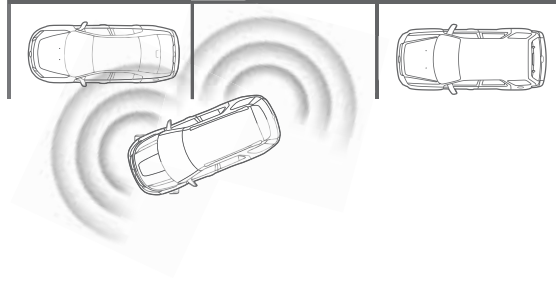
New auto high beams, included with the high-intensity discharge (HID) headlamps,¹ activate themselves to help improve visibility when no automotive headlamps or taillamps are detected in front of your Explorer. If lights are sensed, the system returns to the low-beam setting to help reduce glare for vehicles in front of you.

¹Available feature. ²BLIS replaces standard integrated blind spot mirrors.



Take it easy. Explorer steers itself into parallel spots.

First, you press a button and active park assist¹ alerts you when it has located an appropriate parallel parking spot. Then, you take your hands off the wheel and your Explorer literally steers itself into place. You simply follow system prompts to shift gears and control the brake and accelerator pedals. You'll be parked and on with your evening in practically no time at all.



Limited. White Platinum Metallic Tri-coat. Available equipment.

¹Available feature.

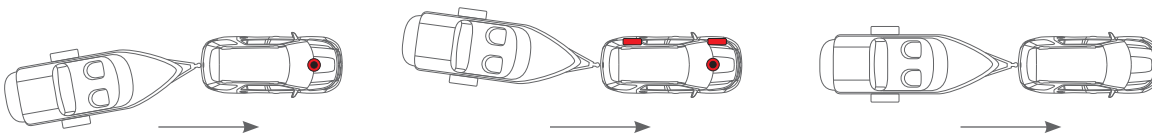
2013 **EXPLORER**
ford.com





Control your trailer. Calm your nerves.

You'll have the utmost confidence towing up to 5,000 lbs. in your Explorer equipped with the 290-hp 3.5L Ti-VCT V6 engine and the Class III Trailer Tow Package!¹ Standard trailer sway control (TSC) and hill start assist are always at the ready. When trailer sway is detected, TSC automatically reduces engine speed and selectively applies the brakes to help you maintain control of both the vehicle and the trailer.² Hill start assist is particularly useful on boat launch ramps since it helps prevent you from rolling downhill when you take your foot off the brake. Whether you're heading up an incline in Drive or in Reverse, Explorer has you covered.



XLT. Deep Impact Blue Metallic. Available equipment.

¹Available feature. ²Remember that even advanced technology cannot overcome the laws of physics. It's always possible to lose control of a vehicle due to inappropriate driver input for the conditions.

2013 **EXPLORER**
ford.com





Select a 2012 IIHS “Top Safety Pick.” For so many reasons.

New for 2013, we've added a standard front-passenger knee airbag. And parents of teens can use our exclusive MyKey® to block calls and deter text messaging while driving. In addition to its 7 standard airbags, Explorer offers inflatable rear safety belts¹ in the 2nd-row outboard seating positions – the first of their kind in automotive production. For improved grip through the turns, there's standard Curve Control, which helps slow the vehicle by as much as 10 mph in about a second if it senses you're taking a curve too quickly.² No wonder Explorer has earned “Top Safety Pick” – the highest possible rating from the Insurance Institute for Highway Safety (IIHS) – 2 years in a row (2011–2012). Be sure to visit the “Explorer Standard Features” page of this brochure for a comprehensive list of the safety and security features engineered into every 2013 Explorer.

¹Available feature. ²Remember that even advanced technology cannot overcome the laws of physics. It's always possible to lose control of a vehicle due to inappropriate driver input for the conditions.



Equip it to go. Do what you like.



Take advantage of versatile standards to make your life easier. Stow all sorts of cargo with its flexible seating configurations and flat load floor. Even transport long objects inside. Add options to help make backing up, changing the seating arrangement and loading cargo easy. Create the Explorer you want, just the way you want it.

- Extra-deep 21-cu.-ft. cargo area behind 3rd row¹
- Rear view camera²
- PowerFold[®] 3rd-row seat²
- Power liftgate²
- 2nd-row 60/40 split-fold seat

¹Including rear seat well. ²Available feature.



XLT in Ruby Red Metallic Tinted Clearcoat customized with smoked hood and side window deflectors, molded splash guards, roof crossbars, and cargo box by THULE®¹

Dual head restraint DVD by INVISION™¹

All-weather floor mats

Remote start systems

Cargo security shade, cargo area protector and rear bumper protector

Exterior

- Locking fuel plug
- Full vehicle covers¹
- Racks and carriers¹
- Sportz® SUV tent¹
- Trailer towing accessories
- Wheel lock kit

Interior

- Interior light kit
- Cargo organizers and protectors
- Ash cup/coin holder
- Carpeted floor mats

Electronics

- Vehicle security systems
- Warning sensor systems¹

¹Ford Licensed Accessory.

EXPLORER Standard Features

Mechanical

3.5L Ti-VCT V6 engine
6-speed SelectShift Automatic® transmission
4-wheel disc Anti-Lock Brake System (ABS)
18.6-gallon fuel tank
Easy Fuel® capless fuel filler
Electric power-assisted steering
Front-wheel drive (FWD)
Hill start assist
Independent front and rear suspension
Traction control
Trailer sway control

Seating

1st-row bucket seats
2nd-row 60/40 split fold-flat seat
3rd-row 50/50 split fold-flat seat

Interior

1st-, 2nd- and 3rd-row dome/map lights
1st- and 2nd-row carpeted floor mats
1st-row center console with armrest and storage
Accessory delay for power features
Adjustable driver and front-passenger sun visors with covered vanity mirrors
Air conditioning with auxiliary rear controls
Cabin air filter
Cargo area hooks
Four 12-volt powerpoints (2 in 1st row, 1 in 2nd row and 1 in rear cargo area)
Front-passenger (1) and B-pillar (2) assist handles
Load floor tie-down hooks
Overhead console with sunglasses holder
Power door locks
Power windows
Rear-window defroster
Steering wheel-mounted cruise, audio, and 5-way MyFord® controls (2)
Tilt/telescoping steering column

Exterior

Bi-functional projector-beam halogen headlamps
Dual chrome exhaust tips
LED taillamps
Power sideview mirrors with integrated blind spot mirrors
Privacy glass (rear doors, rear quarter windows and liftgate window)
Rear spoiler
Roof-mounted antenna
Windshield wipers – Front: speed-sensitive, variable-intermittent with washer; rear: 2-speed with washer

Safety & Security

Personal Safety System™ for driver and front passenger includes dual-stage front airbags, ¹ safety belt pretensioners, safety belt energy-management retractors, safety belt usage sensors, driver's seat position sensor, crash severity sensor, restraint control module and Front-Passenger Sensing System
AdvanceTrac® with RSC® (Roll Stability Control™) and Curve Control
Autolock
Battery saver with headlamps-off delay
Belt-Minder® front safety belt reminder
Child-safety rear door locks
Front height-adjustable shoulder safety belts
Front-passenger knee airbag ¹
Front-seat side airbags ¹
Illuminated Entry System
LATCH – Lower Anchors and Tether Anchors for Children (2nd-row outboard and 3rd-row passenger-side seating positions)
MyKey®
Safety Canopy® System with side-curtain airbags ¹ and rollover sensor
SecuriLock® Passive Anti-Theft System
SOS Post-Crash Alert System™ unlocks doors, flashes hazard lights and sounds horn after airbag deployment or safety belt pretensioner activation in certain collisions ²
Tire Pressure Monitoring System (excludes spare)



Horsepower, Torque & EPA-Estimated Fuel Economy

3.5L Ti-VCT V6 Engine	Horsepower: 290 @ 6,500 rpm	Torque (lb.-ft.): 255 @ 4,000 rpm
6-speed SelectShift Automatic		
FWD	17 city/24 hwy/20 combined mpg	
4WD	17 city/23 hwy/19 combined mpg	
2.0L EcoBoost® I-4 Engine	Horsepower: 240 @ 5,500 rpm ³	Torque: 270 @ 3,000 rpm ³
6-speed automatic	20 city/28 hwy/23 combined mpg	

¹Always wear your safety belt and secure children in the rear seat. ²SOS hardware may become damaged or the battery may lose power in a crash, which could prevent operation. Not all crashes will activate an airbag or safety belt pretensioner. ³Figures achieved using premium unleaded gasoline. Comparisons based on 2012 competitive models (class is Large Utilities), publicly available information and Ford certification data at time of release. Some features discussed may be optional. Vehicles shown may contain optional equipment. Features shown may be offered only in combination with other options or subject to additional ordering requirements or limitations. Dimensions shown may vary due to optional features and/or production variability. Following release of the PDF, certain changes in standard equipment, options and the like, or product delays may have occurred which would not be included in these pages. Your Ford Dealer is the best source for up-to-date information. Ford Division reserves the right to change product specifications at any time without incurring obligations.



EXPLORER Standard Features



Explorer

Equipment Group 100A
Includes all standard features, plus:

Mechanical

58-amp-hr battery
175-amp alternator

Seating

1st-row bucket seats with 2-way adjustable head restraints and 6-way power driver's seat with manual lumbar
Cloth seats

Interior

1st- and 2nd-row door-sill scuff plates with embossed Explorer logo
AM/FM stereo/single-CD player with MP3 capability and 6 speakers
Manual day/night rearview mirror
MyFord® with 4.2" color LCD displays in instrument cluster and center stack; and media hub with auxiliary audio input jack
Power windows with one-touch-down driver's side window feature

Exterior

17" steel wheels with 5-spoke wheel covers and P245/65R17 all-season BSW tires
Black door handles, sideview mirrors, roof-rack side rails, lower bodyside cladding and wheel-lip moldings
Foundry Gray-painted grille
Remote Keyless Entry System with 2 integrated keyhead transmitter remotes



XLT

Equipment Group 200A
Includes all Explorer features, plus:

Mechanical

200-amp alternator
Perimeter alarm

Seating

6-way power front-passenger seat with manual lumbar
Unique cloth seats

Interior

Ford SYNC® voice-activated, in-vehicle connectivity system (includes USB port in media hub)
Illuminated visor vanity mirrors
Leather-wrapped steering wheel and shift knob
Power windows with front one-touch-up/-down feature
SiriusXM Satellite Radio with 6-month trial subscription

Exterior

18" painted aluminum wheels with P245/60R18 all-season BSW tires
Automatic headlamps
Black lower bodyside cladding with chrome accents
Chrome door handles
Fog lamps
Gloss Black, heated sideview mirrors with LED turn signal indicators and security approach lamps
Reverse Sensing System
Satin Silver-finish grille
SecuriCode™ invisible keypad
Silver roof-rack side rails



Limited

Equipment Group 300A
Includes all XLT features, plus:

Mechanical

72-amp-hr battery
Intelligent Access with push-button start
Remote Start System

Seating

1st-row heated bucket seats with 4-way adjustable head restraints, 10-way power driver's seat (including power lumbar and recline) with memory feature and 6-way power front-passenger seat with manual lumbar
2nd-row 60/40 split fold-flat seat with armrest and dual cupholders
Leather-trimmed seating surfaces

Interior

1st- and 2nd-row door-sill scuff plates with bright Explorer logo
110-volt power outlet
Ambient lighting
Audio System from Sony® with 12 speakers and HD Radio™ Technology
Auto-dimming rearview mirror
Cargo net
Dual-zone electronic automatic temperature control
High-gloss Black center stack accents
MyFord Touch® with two 4.2" LCD configurable displays in instrument cluster; 8" LCD touch screen in center stack; and media hub with 2 USB ports, SD card reader and audio/video input jacks
Power-adjustable pedals with memory
SYNC voice-activated, in-vehicle connectivity system with SYNC Services for Traffic, Directions and Information
Unique wood-appearance instrument panel appliques
Universal garage door opener

Exterior

20" painted aluminum wheels with P255/50R20 all-season BSW tires
Body-color grille
Body-color, power-folding, heated sideview mirrors with LED turn signal indicators, security approach lamps and driver's side memory
Rear view camera

Exterior Dimensions

Wheelbase	112.6"
Length	197.1"
Height	70.4"
Width – Excluding mirrors	78.9"
Width – Including mirrors	90.2"
Width – Mirrors folded	82.5"
Liftover height	31.3"

Interior Dimensions

	1st/2nd/3rd Row
Head room	41.4"/40.5"/37.8"
Shoulder room	61.3"/61.0"/50.8"
Hip room	57.3"/56.7"/40.7"
Leg room	40.6"/39.8"/33.2"

Capacities (cu. ft.)

Passenger volume	151.7
Cargo volume behind 1st row	80.7
Cargo volume behind 2nd row	43.8
Cargo volume behind 3rd row ¹	21.0
Fuel tank (gal.)	18.6
Max. towing (lbs.) ²	5,000

¹Including rear seat well. ²Maximum weight shown is for properly equipped vehicle with required equipment and a 150-lb. driver. Weight of additional options, equipment, passengers and cargo must be deducted from this weight. For additional information, see your Ford Dealer.

Dimensions may vary by trim level. Microsoft is a registered trademark of Microsoft Corporation. iPod and iTunes are registered trademarks of Apple Inc. All rights reserved. The Bluetooth word mark is a trademark of the Bluetooth SIG, Inc. iHeartRadio is a registered trademark of Clear Channel Broadcasting, Inc. PANDORA, the PANDORA logo, and the Pandora trade dress are trademarks or registered trademarks of Pandora Media, Inc. Used with permission. HD Radio is a proprietary trademark of iBiquity Digital Corp. SiriusXM Satellite Radio, Traffic and Travel Link subscriptions sold separately or as a package after trial expires. SiriusXM Traffic and Travel Link service available in select markets. See SiriusXM Customer Agreement for complete terms at www.siriusxm.com. Sirius satellite service is available in the 48 contiguous USA, DC, and PR. Sirius, XM and all related marks and logos are trademarks of Sirius XM Radio Inc. The term Wi-Fi® is a registered trademark of the Wi-Fi Alliance®. THULE is a registered trademark of Thule Sweden AB. INVISION is a trademark of Audiovox Corporation. Sony is a registered trademark of the Sony Corporation.



Explorer

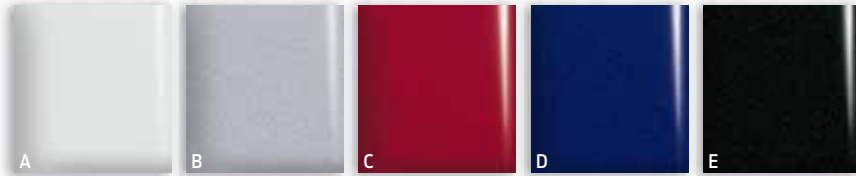


Medium Light Stone cloth trim. | 3rd-row cupholders and storage bins. | MyFord® 4.2" LCD center stack display. | Embossed door-sill scuff plates. | All-weather floor mats.¹



¹Available feature.

Explorer



Exteriors

A Oxford White

B Ingot Silver Metallic

C Ruby Red Metallic Tinted Clearcoat¹

D Deep Impact Blue Metallic

E Tuxedo Black Metallic

1 Medium Light Stone Cloth

Interior

1

1

1

1

1



17" Steel with 5-spoke Wheel Covers
Standard

Available Package

Class III Trailer Tow Package includes engine oil cooler and 7-/4-pin wiring harness (n/a with EcoBoost® engine)

Available Options

2.0L EcoBoost I-4 engine with 6-speed automatic transmission (n/a with Intelligent 4WD, Trailer Tow Package or SelectShift Automatic® transmission)

All-weather floor mats

Ash cup/coin holder with lighter element

Cargo security shade

Ford SYNC® voice-activated, in-vehicle connectivity system includes USB port in media hub (requires SiriusXM Satellite Radio)

Intelligent 4WD with Terrain Management System™ and Hill Descent Control™ (n/a with EcoBoost engine)

Rear bumper protector

Roof-rail crossbars

SiriusXM Satellite Radio

Splash guards



Deep Impact Blue Metallic.

¹Additional charge.
Colors are representative only. See your dealer for actual paint/trim options.



XLT



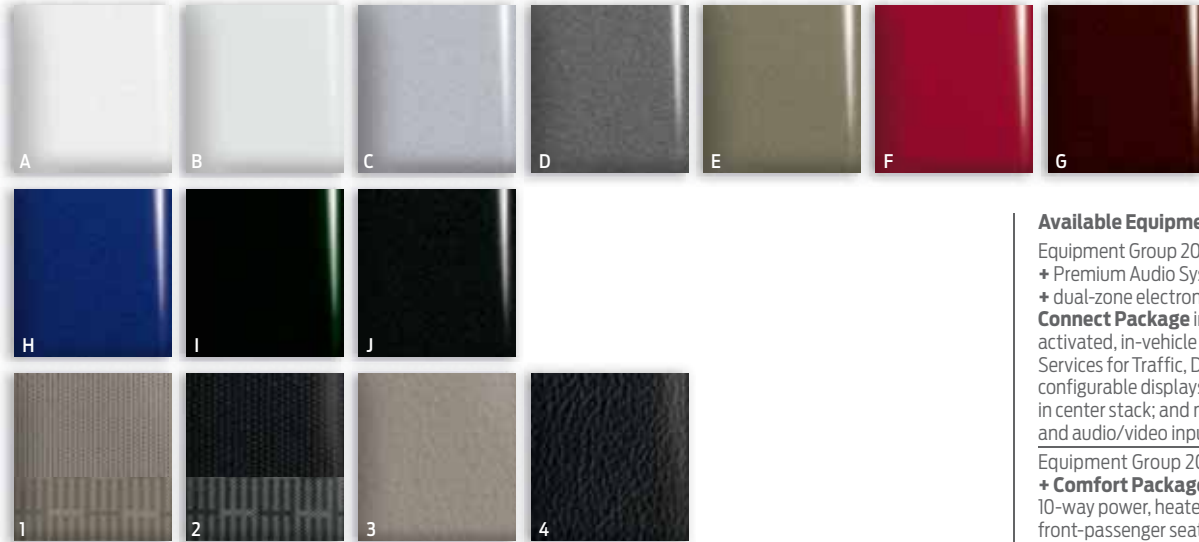
Charcoal Black leather trim. Available equipment. | 2nd-row bucket seats! 2nd-row center console! | Heated sideview mirrors with LED turn signal indicators and security approach lamps. | Satin Silver-finish grille. | Fog lamps.



¹Available feature.

2013 EXPLORER
ford.com





Exteriors

	1	2	3	4
A White Platinum Metallic Tri-coat ¹	1	2	3	4
B Oxford White	1	2	3	4
C Ingot Silver Metallic	1	2	3	4
D Sterling Gray Metallic	1	2	3	4
E Ginger Ale Metallic	1	2	3	4
F Ruby Red Metallic Tinted Clearcoat ¹	1	2	3	4
G Kodiak Brown Metallic	1	2	3	4
H Deep Impact Blue Metallic	1	2	3	4
I Green Gem Metallic	1	2	3	4
J Tuxedo Black Metallic	1	2	3	4

- 1 Medium Light Stone Cloth – Standard
- 2 Charcoal Black Cloth – Standard
- 3 Medium Light Stone Leather – Requires Comfort Package
- 4 Charcoal Black Leather – Requires Comfort Package

Interiors



18" Painted Aluminum Standard



20" Polished Aluminum Available



White Platinum Metallic Tri-coat.

Available Equipment Groups

Equipment Group 201A – Auto-dimming rearview mirror + Premium Audio System with 9 speakers + rear view camera + dual-zone electronic automatic temperature control + **Driver Connect Package** includes SYNC® with MyFord Touch® voice-activated, in-vehicle connectivity system, which includes SYNC Services for Traffic, Directions and Information; two 4.2" LCD configurable displays in instrument cluster; 8" LCD touch screen in center stack; and media hub with 2 USB ports, SD card reader and audio/video input jacks

Equipment Group 202A – Includes all content of 201A + **Comfort Package** includes leather-trimmed seating surfaces; 10-way power, heated driver's seat; and 6-way power, heated front-passenger seat

Available Packages

BLIS® Plus Inflatable Rear Safety Belt Package includes BLIS (Blind Spot Information System) with cross-traffic alert and inflatable rear safety belts in 2nd-row outboard seating positions (requires 201A or 202A)

Class III Trailer Tow Package includes engine oil cooler and 7-/4-pin wiring harness (n/a with EcoBoost engine)

Available Options

2.0L EcoBoost® I-4 engine with 6-speed automatic transmission (n/a with 20" wheels, Intelligent 4WD, Trailer Tow Package or SelectShift Automatic® transmission)

20" polished aluminum wheels (requires 201A or 202A; n/a with EcoBoost engine)

2nd-row bucket seats (requires 202A)

2nd-row center console (requires 2nd-row bucket seats and 202A)

All-weather floor mats

Ash cup/coin holder with lighter element

Cargo security shade

Dual head restraint DVD by INVISION™²

Dual-panel moonroof (requires 201A or 202A)

Intelligent 4WD with Terrain Management System™ and Hill Descent Control™ (n/a with EcoBoost engine)

Power liftgate (requires 201A or 202A)

Rear bumper protector

Roof-rail crossbars

Splash guards

Voice-activated Navigation System with SD card for map and POI storage, and integrated SiriusXM Traffic and Travel Link with 6-month trial subscription (requires 202A)

Wheel lock kit (requires 201A or 202A and 20" wheels)

¹Additional charge. ²Ford Licensed Accessory. Colors are representative only. See your dealer for actual paint/trim options.



Limited



Charcoal Black leather trim with perforated inserts. Available equipment. ■ 2nd-row bucket seats! 2nd-row center console! ■ Intelligent Access with push-button start. ■ Rain-sensing wipers! ■ 2nd-row climate control, 12-volt powerpoint and 110-volt power outlet.



¹Available feature.

Limited



Exteriors	Interiors				
A White Platinum Metallic Tri-coat ¹	1	2	3	4	5
B Ingot Silver Metallic	1	2	3	4	
C Sterling Gray Metallic	1	2	3	4	5
D Ginger Ale Metallic	1	2	3	4	
E Ruby Red Metallic Tinted Clearcoat ¹	1	2	3	4	
F Kodiak Brown Metallic	1	2	3	4	5
G Deep Impact Blue Metallic	1	2	3	4	5
H Green Gem Metallic	1	2	3	4	
I Tuxedo Black Metallic	1	2	3	4	5

- 1 Medium Light Stone Leather – Standard
- 2 Charcoal Black Leather – Standard
- 3 Medium Light Stone Leather with Perforated Inserts – Requires Luxury Seating Package
- 4 Charcoal Black Leather with Perforated Inserts – Requires Luxury Seating Package
- 5 Charcoal Black Leather with Pecan Perforated Inserts – Requires Luxury Seating Package



20" Painted Aluminum Standard



20" Polished Aluminum Available

Available Equipment Groups

Equipment Group 301A – Voice-activated Navigation System with SD card for map and POI storage, and integrated SiriusXM Traffic and Travel Link with 6-month trial subscription + power liftgate + heated steering wheel + power-tilt/-telescoping steering column + **Luxury Seating Package** includes PowerFold[®] 3rd-row seat, perforated leather-trimmed seats, heated and cooled driver and front-passenger seats, and 10-way power front-passenger seat with power lumbar

Equipment Group 302A – Includes all content of 301A + active park assist + Lane Keeping System + adaptive cruise control and collision warning with brake support + rain-sensing wipers + HID headlamps with auto high beams + **BLIS[®] Plus Inflatable Rear Safety Belt Package** includes BLIS (Blind Spot Information System) with cross-traffic alert and inflatable rear safety belts in 2nd-row outboard seating positions

Equipment Group 303A – Includes all content of 302A + 2.0L EcoBoost[®] I-4 engine with 6-speed automatic transmission

Available Packages

BLIS Plus Inflatable Rear Safety Belt Package

Class III Trailer Tow Package includes engine oil cooler and 7-/4-pin wiring harness (n/a with EcoBoost engine)

Available Options

2.0L EcoBoost I-4 engine with 6-speed automatic transmission (n/a with 302A, Intelligent 4WD, Trailer Tow Package or SelectShift Automatic[®] transmission)

20" polished aluminum wheels (requires 301A, 302A or 303A)

2nd-row bucket seats (requires 301A, 302A or 303A)

2nd-row center console (requires 2nd-row bucket seats and 301A, 302A or 303A)

All-weather floor mats

Ash cup/coin holder with lighter element

Cargo security shade

Dual head restraint DVD by INVISION^{™2}

Dual-panel moonroof

Intelligent 4WD with Terrain Management System[™] and Hill Descent Control[™] (n/a with EcoBoost engine)

Power liftgate

Rear bumper protector

Roof-rail crossbars

Splash guards

Voice-activated Navigation System with SD card for map and POI storage, and integrated SiriusXM Traffic and Travel Link with 6-month trial subscription³

Wheel lock kit



Sterling Gray Metallic. Available equipment.

¹Additional charge. ²Ford Licensed Accessory. ³SYNC Services is not available with optional Navigation System with SiriusXM Traffic and Travel Link. Colors are representative only. See your dealer for actual paint/trim options.





QUALITY, GREEN, SAFE AND SMART.

ford.com

New Vehicle Limited Warranty. We want your Ford Explorer ownership experience to be the best it can be. Under this warranty, your new vehicle comes with 3-year/36,000-mile bumper-to-bumper coverage, 5-year/60,000-mile Powertrain Warranty coverage, 5-year/50,000-mile safety restraint coverage, and 5-year/unlimited-mile corrosion (perforation) coverage – all with no deductible. Please ask your Ford Dealer for a copy of this limited warranty. □ **Roadside Assistance.** Covers your vehicle for 5 years or 60,000 miles, so you have the security of knowing that help may be only a phone call away should you run out of fuel, lock yourself out of the vehicle or need towing. Your Ford Dealer can provide complete details on all of these advantages. □ **Ford Credit.** Get the ride you want. Whether you plan to lease or finance, you'll find the choices that are right for you at Ford Credit. Ask your Ford Dealer for details or check us out at fordcredit.com. □ **Ford Extended Service Plan.** For a purchase or lease, the Ford Extended Service Plan (ESP) gives you "Peace-of-Mind" protection designed to cover key vehicle components and protect you from the cost of unexpected repairs. Ask your dealer for a Ford ESP, the only service contract backed exclusively by Ford and honored at all Ford Lincoln dealerships. □ **Insurance Services.** Get Ford Motor Company quality in your auto insurance. Our program offers industry-leading benefits and competitive rates. Call 1-877-367-3847, or visit us at fordvip.com for a no-obligation quote. Insurance offered by American Road Services Company (in CA, American Road Insurance Agency), a licensed agency and subsidiary of Ford Motor Company. □ **Genuine Ford Accessories** will be warranted for whichever provides you the greatest benefit: 12 months or 12,000 miles (whichever occurs first), or the remainder of your Bumper-to-Bumper 3-year/36,000-mile New Vehicle Limited Warranty. Ford Licensed Accessories (FLA) are warranted by the accessory manufacturer's warranty. FLA are fully designed and developed by the accessory manufacturer and have not been designed or tested to Ford Motor Company engineering requirements. Contact your Ford Dealer for details and/or a copy of all limited warranties.

Follow Ford:



facebook.com/fordexplorer



twitter.com/ford



youtube.com/explorer



gplus.to/FordMotorCompany

